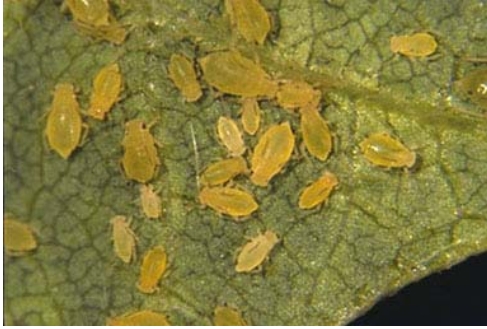


Aphids

Many species (Homoptera: Aphididae)

(Origin: Native)



Soybean Aphids

Primary Host: Many vegetable crops.

Damage: Adults and immatures suck sap from plants, reducing vigor and growth of plant. Produce “honeydew” (sticky liquid) on which a black fungus can grow.

Management: Hide under leaves. Because of small size, hidden behavior and rapid reproduction, populations can become very large before they are noticed.

Biocontrols: Several natural enemies such as lady beetles and lacewings feed on them. Several parasitoids lay eggs within aphids, killing them as the nymphs develop.

Cultural Controls: Avoid high nitrogen levels in plants (enhances aphid reproduction) by using less soluble forms of nitrogen.

Physical Controls: Proper pruning and washing aphids off with a strong stream of water can help.

Chemical Controls: Contact your local Penn State County Extension Agent for more information

<http://www.extension.psu.edu/extmap.html>

Insect Description:

Adults: About $\frac{1}{8}$ ” long; soft-bodied; light to dark green; may be winged or wingless. Cornicles, paired tubular structures on abdomen, are helpful in identification.

Nymph: Daughters are born alive containing partly formed daughters inside their bodies. (See life history below).

Eggs: Laid in protected places only near the end of the growing season.

Life History: Females lay eggs near the end of the growing season in protected places on host plants. In spring, plump “stem mothers” emerge from these eggs, and give live birth to daughters, and they give birth to more daughters, all without mating. At the end of the growing season, males are produced, and females born at the same time have eggs rather than live young in them. Mating occurs, the eggs are fertilized and overwintering eggs are again laid in protected areas on the plants.



Asian Lady Beetle feeding on Aphids