

Literature Citations and Additional References and Resources for School Integrated Pest Management

LITERATURE CITED IN MANUAL

Abbot, W. S. and S. C. Billings. 1935. Further work showing that paradichlorobenzene, naphthalene and cedar oils are ineffective as repellents against clothes moths. *Journal of Economic Entomology* 28:493-495.

American Mosquito Control Association, J.B. Smith Hall, 176 Jones Avenue, Rutgers University, New Brunswick, NJ 08901-9536. www.mosquito.org

Back, E. A. and F. Rabek. 1923. *Red cedar chests as protection against moth damage*. USDA Technical Bulletin 1051.

Bobbitt, V. 1994. Join the plant health care revolution. *Washington Park Arboretum Bulletin* 57(4):12-15.

Bode, W. M. and S. B. Jacobs. 1995. *Carpenter ants Camponotus pennsylvanicus (DeGeer)*. The Pennsylvania State University, Department of Entomology Pest Sheet HP-1. 2 pp.

Bry, R. E., L. L. McDonald and J. H. Lang. 1992. Protecting stored woolens against fabric-insect damage: a long-term nonchemical method. *Journal of Economic Entomology* 65(6):1735-1736.

Common house-invading ant species (chart). No date. University of Florida School IPM Web site at: schoolipm.ifas.ufl.edu/tp6b.htm

Contract guide specification for integrated pest management programs in government buildings and schools. 1998. University of Florida School IPM Web site at: schoolipm.ifas.ufl.edu/doc/contract.pdf

Ebeling, W. 1975. *Urban entomology*. University of California, Los Angeles. Division of Agricultural Sciences. 695 pp.

Frishman, A. 1994. 15 ways to misuse German cockroach baits. *Pest Control* 22(4):23, 67.

Higgins, W. 2002. *Policy and Procedures For Mosquito Control*. Western® Pest Service, Voorhees, N.J.

Hoover, G. A. 1992. *Chinch bugs*. The Pennsylvania State University. Department of Entomology Pest Sheet Turf-2. 2 pp.

Integrated pest management in schools: IPM training manual. 1995. MDA 288-95. Prepared by Pinto & Assoc. for Maryland Dept. of Agriculture, 50 Harry S. Truman Parkway, Annapolis, MD 21401. (410) 841-5710, fax 401-841-2765. 56 pp.

IPM for schools: a how-to manual. 1997. EPA 909-B-97-001. Free while supply lasts. U.S. Environmental Protection Agency, Region 10, 1200 Sixth Ave., Seattle, WA 98101. (206) 553-2584 or (800) 424-4EPA. (Contact: Don Priest). 213 pp.

Jacobs, S. B. 1992. *Eastern subterranean termites*. Penn State Cooperative Extension. 6 pp.

Jacobs, S. B. 1998. *Booklice*. The Pennsylvania State University. Department of Entomology Pest Sheet NP-2. 1 p.

Jacobs, S. B. 1998. *Four Common Ticks of Pennsylvania*. Penn State Entomology Department Fact Sheet. www.ento.psu.edu/extension/factsheets/common_ticks.htm

Jacobs, S. B. 1998. *Moth flies in the home*. The Pennsylvania State University. Department of Entomology Pest Sheet NP-6. 1 p.

Jacobs, S. B. 1998. *Silverfish*. The Pennsylvania State University. Department of Entomology Pest Sheet SP-3. 1 p.

Jacobs, S. B. 2000. *Clothes moths*. The Pennsylvania State University. Department of Entomology Pest Sheet HP-17. 2 pp.

Jacobs, S. B. 2000. *Pavement ant*. The Pennsylvania State University. Department of Entomology Pest Sheet NP-11. 2 pp.

Klass, C. 1993. *Integrated Pest Management for the Deer Tick*. 139IFS100.00. Department of Entomology, Cornell University. www.cce.cornell.edu/suffolk/grownnet/ticks/deertick.htm

- Laudani, H. 1957. PCOs should treat cedar chests and closets for moths. *Pest Control* 25(10):39-40, 98.
- Laudani, H., and P. H. Clark. 1954. The effects of red, white, and South American cedar chests on the various stages of the webbing clothes moth and the black carpet beetle. *Journal of Economic Entomology* 47:1107-11.
- Lyon, W. F. 1997. *Clothes moths*. No date. The Ohio State University Extension Fact Sheet HYG-2107-97. Web site at: ohioline.osu.edu/hyg-fact/2000/2107.html
- Lyon, W. F. 1995. *Spiders in and around the house*. The Ohio State University Extension Fact Sheet, HYG-2060-95. 8 pp. Web site at: ohioline.osu.edu/hyg-fact/2000/2060.html
- Mallis, A. 1982. *Handbook of pest control*. Franzak and Foster. Cleveland, OH. 1,101 pp.
- Mallis, A. 1997. *Handbook of pest control*. 8th Ed. Mallis Handbook and Technical Training Company. 1,455 pp.
- Moore, H. B. 1995. Wood-destroying insects. *Pest Control Magazine*. Cleveland, OH. 120 pp.
- Mosquito Prevention on Irrigated Farms*. 1967. USDA, Agricultural Research Service. Agriculture Handbook No. 319. 32 pp.
- Niemczyk, H. 1981. *Destructive turf insects*. HDC Book Sales, Wooster, OH. Available from 2935 Smithville Western Rd., Wooster, OH 44691. 48 pp.
- Oi, F. M. 1987. *IPM Tactics for Tick Control*. Auburn University. www.aces.edu/department/ipm/tick.htm
- Pennsylvania School Boards Association. 1999. *PSBA Policy Guide for Pennsylvania Schools; Section: Property; Title: 716. Integrated Pest Management*.
- Pennsylvania pesticide control act of 1973, Act of March 1, 1974, P.L. 90, No. 24, 3 P.S. 111.21-111.61 (1987) and Title 7—Agriculture, Department of Agriculture, Part V. Bureau of Plant Industry, [7 PA. Code Ch. 128], Pesticides, rules and regulations*. Available from the Pennsylvania Department of Agriculture, Bureau of Plant Industry, 2301 N. Cameron St., Harrisburg, PA 17110-9408.
- Pickens, L. G., E. T. Schmidtman, and R. W. Miller. 1994. *How to control house and stable flies without using pesticides*. U.S. Department of Agriculture, Washington, D.C., USDA Information Bulletin #673, 14 pp.
- Pitts, C. W., G. L. Holbrook, S. I. Gripp, and W. K. Hock. 2000. *Mosquito Biology and Control*. Penn State Agricultural Research and Cooperative Extension. 6 pp. PDF file available at: www.pested.psu.edu/spWNmosqbiol.pdf
- Powell, P. K., ed. No date. *Getting started with school IPM*. University of Florida School IPM Web site at: schoolipm.ifas.ufl.edu/doc/started.htm
- Pratt, H. D. 1953. Cockroaches: Pictorial key to some common species. In *Pictorial keys: arthropod, reptiles, birds and mammals of public health significance*. U.S. Dept. of Health, Education and Welfare, Public Health Service, Communicable Disease Center. Atlanta, GA.
- Proceedings of the Seventy-Sixth Annual Meeting of the New Jersey Mosquito Control Association, Inc.* 1989. pp. 45-50. www-rci.rutgers.edu/~insects/larvsurv.htm
- Public Health Pesticide Applicator Training Manual*. University of Florida and the American Mosquito Control Association Public Health Pest Control Web site. vector.ifas.ufl.edu/
- Ray, T., G. M. Caputo, and S. B. Jacobs. 1994. *Lyme Disease: A Manual for Health Care Workers in Pennsylvania*. Department of Entomology, Penn State College of Agricultural Sciences. 14 pp.
- Rhay, T. 1994. IN: Leslie, A. R., ed. *Handbook of integrated pest management for turf and ornamentals*. Lewis Publishers, Boca Raton, FL. pp. 611–612.
- Richman, D. L. No date. *IPM for fleas in schools*. University of Florida School IPM Web site at: schoolipm.ifas.ufl.edu/tp5.htm
- Satrom, G. and D. Stephens. 1979. *A fly control handbook, IPM for manure and compost systems*. Beneficial Biosystems, Emeryville, CA. 42 pp. (Out of print.)
- Shetlar, D. J., P. R. Heller, and P. D. Irish. 1983. *Turfgrass insect and mite manual*. The Pennsylvania Turfgrass Council. 67 pp.
- Smith, E. H. and Whitman, R. C. 1992. *NPCA field guide to structural pests*. National Pest Control Assoc. 1,083 pp.
- Stier, J. C., K. Delahaut, P. Pellitteri, and B. Becker. 1999. *Wisconsin's school integrated pest management manual: School pilot program draft*. Available at: ipcm.wisc.edu/programs/school/default.htm
- Strickland, R.K., R.R. Gerrish, J.L. Hourrigan, and G.O. Schubert. 1976. *Ticks of Veterinary Importance*. USDA, APHIS. Ag Handbook 485. 122 pp.
- Vargas, J. M., Jr., D. Roberts, T. K. Dannenberger, M. Otto, and R. Detweiler. 1939. Biological management of turfgrass pests and the use of prediction models for more accurate pesticide applications, pp 121–126 in *Integrated pest management for turfgrasses and ornamentals*. A. R. Leslie and R. L. Metcalf, eds., U.S. Environmental Protection Agency, Washington, D.C.

ADDITIONAL REFERENCES AND RESOURCES

Print Materials

Bennett, G. W., J. M. Owens and R. M. Corrigan. 1998. *Truman's scientific guide to pest control operations*. Purdue University/Avanstar Communications, West Lafayette, IN. 494 pp.

Contracting guidelines for integrated pest management services in Maryland public schools. 1995. MDA 286-95. Maryland Dept. of Agriculture, 50 Harry S. Truman Parkway, Annapolis, MD 21401. (410) 841-5710, fax (401) 841-2765. 75 pp.

Davidson, J. A. and M. J. Raupp. 1997. *Landscape IPM guidelines for integrated pest management of insect and mite pests on landscape trees and shrubs*. Bulletin 350. University of Maryland Cooperative Extension Service. (301) 405-3913. 106 pp.

Directory of least-toxic pest control products. 1999. *The IPM Practitioner* 20 (11/12), Bio-Integral Resource Center (BIRC). Nov/Dec. 1998. 52 pp.

Flint, M. L., S. Darr, and R. Molinar. 2003. *Establishing Integrated Pest Management Policies and Programs: A Guide for Public Agencies*. Publication 8093. University of California, Division of Agriculture and Natural Resources. 13 pp. PDF file available at: www.anrcatalog.ucdavis.edu/PDF/8093.PDF

Hollingsworth, C. S., et al. 2002. *Integrated Pest Management for Northeast Schools*. NRAES-152. Natural Resource, Agriculture, and Engineering Service, Cooperative Extension, 152 Riley-Robb Hall, Ithaca, NY 14853-5701. (607-255-7654). 60 pp. PDF file available at: www.umass.edu/umext/ipm/publications/for_viewing_only_ipmns.pdf

Integrated management of structural pests in schools. 1994. Illinois Dept. of Public Health. PDF file available at: www.idph.state.il.us/envhealth/pdf/imsp.pdf

Integrated pest management in schools: IPM training manual for grounds maintenance. 1998. Bulletin #358. University of Maryland Cooperative Extension Service. (301) 405-3913. 157 pp.

Integrated pest management kit for building managers: how to implement an IPM program in your buildings. No date. Massachusetts Dept of Food and Agriculture, Pesticide Bureau. (617) 727-3018. 8 pp. PDF file available at: www.state.ma.us/dfa/pesticides/publications/IPM_kit_for_bldg_mgrs.pdf

IPM workbook for New York state schools. 1998. Pub. No. 605. Sponsored by the New York State Dept of Environmental Conservation and Cornell Cooperative Extension. 9 sections. PDF file available at: www.nysipm.cornell.edu/publications/schoolwkbk.pdf

Montana model school integrated pest and pesticide management program, the. 1994. Montana Dept. of Agriculture.

Olkowski, W., S. Daar, and H. Olkowski. 1991. *Common-sense pest control: least-toxic solutions for your home, garden, pets and community*. Taunton Press. Newtown, CT. 715 pp.

Outdoor Integrated Pest Management for Maine Schools. 2002. University of Maine Cooperative Extension. Maine School IPM Program. (207-287-2731). 136 pp. www.thinkfirstspraylast.org/schoolipm

Pest control in the school environment: adopting integrated pest management. 1993. EPA 735-F-93-012. Free while supply lasts. U.S. Environmental Protection Agency. Public Information Center (3404), 401 M Street SW, Washington, DC 20460. (703) 305-6457. 44pp.

Pest management recommendations for commercial production and maintenance of trees and shrubs. 1997. Cornell Cooperative Extension. (607) 255-2080. E-mail: dist_cent@cce.cornell.edu

Riley, B. 1994. *Getting pesticides out of our schools*. Northwest Coalition of Alternatives to Pesticides, P.O. Box 1393, Eugene, OR 97440. (541) 344-5044. 30 pp.

Simmons, S. E., T. E. Tidwell, and T. A. Barry. 1996. *Overview of pest management policies, program and practices in selected California public school districts*. PM96-01 State of Ca. EPA-DPR. Pest Management Analysis and Planning Program. 68 pp.

Summary of structural pest control programs and implementation of IPM in Maryland public school systems. 1997. Maryland Dept. of Agriculture, 50 Harry S. Truman Parkway, Annapolis, MD 21401. (410) 841-5710, fax (401) 841-2765. 37 pp.

Urban integrated pest management: a guide for commercial applicators. 1992. Prepared for U.S. EPA by DUAL & Associates, Inc. (703) 527-3500.

Uva, R. H., J. C. Neal, and J. M. DiTomasco. 1997. *Weeds of the northeast*. A Comstock Book. ISBN 0-8014-8334-4. 414 pp.

What's All the Buzz About Mosquitoes? IPM Brochure No. 606. www.nysipm.cornell.edu/publications/mosquitobro/index.html

Videos

Videos with an asterisk (*) behind them may be borrowed from the Pennsylvania Department of Agriculture.

Direct requests to:

The Pennsylvania Department of Agriculture
Bureau of Plant Industry/Pennsylvania IPM Program
2301 North Cameron Street, Rm. G11
Harrisburg, PA 17110-9408
(717) 772-5204

Frishman, A. M. 1986. The Frishman Video Training Series: Five-Volume Series (With Training Tips, a Post-Test, and a Verifiable Attendance Sheet).

- Vol. 1. Practical pesticide safety, Part 1. Protecting the applicator. Time: 25 min.*
- Vol. 2. Biology of the house mouse. 25 min.*
- Vol. 3. Control of the house mouse. 60 min.*
- Vol. 4. Biology of subterranean termites. 60 min.*
- Vol. 5. Biology of cockroaches. 60 min.*

Integrated Pest Management (IPM) for Schools Series: 1997. Texas Agricultural Extension Service. The Texas A&M University System: Five Volumes.

- 1. An introduction. Time: 15 min.*
- 2. Structural pest control. Time: 22 min.*
- 3. IPM for food handling areas. Time: 16 min.*
- 4. Bidding and contracting for pest control in schools. Time: 17 min.*
- 5. The challenge of administering pest control in schools. Time: 17 min.*
- 6. Landscape IPM. Time: 32 min.*

IPM in schools. Pennsylvania Dept. of Agriculture and Penn State. Time: 11 min.*

National Pest Control Association. No date. Produced by the University of Delaware. Includes Program Script, Tips on Training, Pretest, Post-Test, Answer Sheet.
Carpenter ants. Time: 29 min.*
Safety with pesticides. Time: 15 min.*
Stinging insects. Time: 20 min.*
Subterranean termites behavior and biology. Time: 22 min.*

Pest control in the school environment: adopting IPM. 1994. Featuring Dr. Austin M. Frishman, Ph.D. and Jeffrey B. Tucker, RPE. Video Development Services, Inc., PO Box 701067, Houston, TX 77270. 713-681-9004. Time: 90 min.

Pest management in health care facilities. 1987. Featuring Dr. Austin M. Frishman, Ph.D., and Jeffrey B. Tucker, RPE. Video Development Services, Inc. Time: 90 min. (Includes four Planning Guides).*

Web Sites

American Mosquito Control Association, J. B. Smith Hall, 176 Jones Avenue, Rutgers University, New Brunswick, NJ 08901-9536. www.mosquito.org

EPA. *IPM for Schools: A How-to Manual*, includes complete EPA Manual, downloadable as PDF files. www.epa.gov/region09/toxic/pest/school/index.html

The IPM Institute of North America, Inc. Web site with extensive school IPM information as well as IPM Standards, pest control, links, etc. www.ipminstitute.org/

Pennsylvania IPM. Web site with much IPM information and links, including the model Integrated Pest Management Policy for Schools, Developed by the Pennsylvania IPM Program and the Pennsylvania School Boards Association. paipm.cas.psu.edu

The Pennsylvania State University Entomology Department Insect Pest Fact Sheets. www.ento.psu.edu/extension/fact_sheets.htm

The Pennsylvania State University Ornamental Plant Disease Fact Sheets. paipm.cas.psu.edu/ProblemSolvers/land1ProblSolv.htm

The Pennsylvania State University Turfgrass Extension Program. www.agronomy.psu.edu/Extension/Turf/TurfExt.html

Purdue University IPM Technical Resource Center. IPM for Schools and Childcare Facilities. www.entm.purdue.edu/entomology/outreach/schoolipm/

University of Florida. Web site with excellent information for school IPM. schoolipm.ifas.ufl.edu/

Urban Entomology. Walter Ebeling, 1975. Most of the text from this manual is on this Web site. www.entomology.ucr.edu/ebeling/

Supplemental Materials to Help Develop IPM Programs in Pennsylvania Schools

PESTICIDE RULES AND REGULATIONS IN PENNSYLVANIA SCHOOLS

The following information is excerpted from the publication **PENNSYLVANIA PESTICIDE CONTROL ACT OF 1973, Act of March 1, 1974, P.L. 90, No. 24, 3 P.S. 111.21-111.61 (1987)**. For complete text refer to the actual publication. Copies are available from the Pennsylvania Department of Agriculture, 2301 North Cameron Street, Harrisburg, PA 17110-9408.

In order to apply pesticides in a school or on school grounds, the applicator needs to be a **Certified Public/Commercial Applicator** [Section 17.1], a registered **Pesticide Application Technician**, or a non-certified applicator or non-registered technician **under the direct supervision of a Certified Applicator**. [Sections 16.1 and 16.2].

Pesticide in this document means any substance or mixture of substances intended for preventing, destroying, repelling, or mitigating any pest, and any substance or mixture of substances intended for use as a plant regulator, defoliant, or desiccant. [Section 4 (31)].

For in-house pest control, Section 15.1 applies.

Pesticide Application Licensing. Each ... government agency or other entity engaged in applying or contracting for the application of pesticides, as meets the definition of “commercial applicator,” shall hold a license stating those categories in which it is to do business. No license shall be issued to any ... agency, nor shall any license remain valid unless such ... agency has a certified applicator in its employ at all times.

Sections 29 and 30.1 provide for Criminal Penalties and Civil Penalties for violation of the above regulations.

The next section is from the publication **TITLE 7—AGRICULTURE, DEPARTMENT OF AGRICULTURE, PART V. BUREAU OF PLANT INDUSTRY, [7 PA. CODE CH. 128], PESTICIDES, RULES AND REGULATIONS**. (The second part of the reference listed at the end of this article).

Definitions from § 128.2:

Common access area—The areas within a school building where students/attendees normally congregate, assemble or frequent during normal academic instruction or extracurricular activities. The term does not include areas such as kitchens, boiler rooms, utility/maintenance rooms and areas which are physically blocked or restricted from student/attendee access.

Current registry—The Pesticide Hypersensitivity Registry with the most recent effective date.

Governmental entity—Any executive or independent agency or unit of the Commonwealth, or local agency, including a county, a city, a borough, town, township, school district, municipal authority, or political subdivision thereof.

Integrated pest management—The managed use of combined pest control alternatives, including cultural, mechanical, biological, and chemical, to most effectively prevent or reduce to acceptable levels damage caused by pests.

Pesticide hypersensitivity—Excessive or abnormal sensitivity to pesticides.

School—A public, nonpublic, or licensed private elementary or secondary school wherein a resident of this Commonwealth may fulfill the compulsory school attendance requirements and which meets the applicable requirements of Title IV of the Civil Rights Act of 1964 (42 U.S.C.A. § 2000c) (Public Law 88-352, 78 Stat. 241). The term also includes a kindergarten or preschool program operated by a school and a child day care center operating under a certificate of compliance issued by the Department of Public Welfare.

§ 128.41. Requirements for Certification.

- (a) A person is deemed to be a commercial or public applicator and required to be certified if one or more of the following criteria are met:
- (3) A person who applies or supervises the application of a pesticide to the following locations or who is involved in the following types of application:
 - (i) *Fumigation*.
 - (v) *Playgrounds and athletic field*—Includes a person who applies a pesticide to a public playground or an athletic field.
 - (vii) *Schools*—Includes a person who uses a pesticide on school property, except for the use of disinfectants and sanitizers within the school building.

§ 128.42. Categories of Commercial and Public Applicators.

- (11) *Household and health related*—The use of a pesticide in, on or around a food handling establishment, a human or nonagricultural animal dwelling, an institution such as a school or hospital...
- (12) *Wood destroying pests*—The use of a pesticide to control or prevent termites, powder post beetles or other wood destroying pests infesting a residence, school, hospital, ... and an area adjacent to those structures.
- (23) *Park or school pest control*—The use of a pesticide in a campground or recreational area of a public or private park or on school property. (*This category is recommended for in-house personnel*).

§ 128.106. Additional Responsibilities within School Buildings.

A pesticide other than a disinfectant or sanitizer may not be applied in a common access area within a school building when students are expected to be in the common access area for normal academic instruction or organized extracurricular activities within 7 hours following the application. The applicator shall also comply with reentry time restrictions contained on the pesticide label, whichever is greater.

Reference: PENNSYLVANIA PESTICIDE CONTROL ACT OF 1973, Act of March 1, 1974, P.L. 90, No. 24, 3 P.S. 111.21-111.61 (1987) and TITLE 7—AGRICULTURE, DEPARTMENT OF AGRICULTURE, PART V. BUREAU OF PLANT INDUSTRY, [7 PA. CODE CH. 128], PESTICIDES, RULES AND REGULATIONS. (Available from the Pennsylvania Department of Agriculture, Bureau of Plant Industry, 2301 N. Cameron St., Harrisburg, PA 17110-9408.

HOUSE AMENDED
PRIOR PRINTER'S NOS. 761, 1405, 1787 PRINTER'S NO. 1860

THE GENERAL ASSEMBLY OF PENNSYLVANIA

SENATE BILL

No. 705 Session of 2001

ACT 35, signed by the Governor, April 18, 2002

Amending the act of March 10, 1949 (P.L.30, No.14), entitled "An act relating to the public school system, including certain provisions applicable as well to private and parochial schools; amending, revising, consolidating and changing the laws relating thereto," providing for integrated pest management programs in schools.

The General Assembly of the Commonwealth of Pennsylvania hereby enacts as follows:

Section 1. The act of March 10, 1949 (P.L.30, No.14), known as the Public School Code of 1949, is amended by adding a section to read:

Section 772.1 Integrated Pest Management Programs.

- (A) Each school shall, by January 1, 2003, adopt an integrated pest management plan in accordance with the integrated pest management policies established by the department on the effective date of this section, until regulations are promulgated by the department.
- (B) The department shall do all of the following:
- (1) Maintain a Hypersensitivity Registry to assist in the notification of students and employees who are especially sensitive to pesticides.
 - (2) Designate an integrated pest management coordinator within the department to assist schools in the adoption and administration of integrated pest management plans.
 - (3) Prepare a standard structural integrated pest management agreement and distribute the standard agreement to schools.
 - (4) Provide other materials and assistance to schools to aid them in developing integrated pest management plans.
 - (5) Promulgate regulations, consistent with its policies in effect on the date of this section, to assist schools in implementing their responsibilities under this section.
- (C) The following words and phrases when used in this section shall have the meanings given to them in this subsection unless the context clearly indicates otherwise:

"Department." The Department of Agriculture of the Commonwealth.

"Integrated pest management plan." A plan which establishes a sustainable approach to managing pests by combining biological, cultural, physical and chemical tools in a way which minimizes economic, health and environmental risks.

"Pest." An insect, rodent, nematode, fungus, weed or other form of terrestrial or aquatic plant or animal life or virus, bacteria or other micro-organism, except viruses, bacteria or other micro-organisms on or in living man or other living animals, declared to be a pest under section 25(c)(1) of the Federal Insecticide, Fungicide, and Rodenticide Act (61 Stat. 163, 7 U.S.C. § 136w).

"Pesticide." A substance or mixture of substances intended for preventing, destroying, repelling or mitigating a pest and a substance or mixture of substances intended for use as a plant regulator, defoliant or desiccant.

"School." A school district, an intermediate unit, an area vocational-technical school or any of these entities acting jointly.

Section 2. This act shall take effect in 60 days.

PRIOR PRINTER'S NOS. 1506, 2228, 2292, 3461, 3616 PRINTER'S NO. 3678

THE GENERAL ASSEMBLY OF PENNSYLVANIA

HOUSE BILL

No. 1289 Session of 2001

ACT 36, signed by the Governor, April 18, 2002

Amending the act of March 10, 1949 (P.L.30, No.14), entitled "An act relating to the public school system, including certain provisions applicable as well to private and parochial schools; amending, revising, consolidating and changing the laws relating thereto," providing for approval of unfounded debt in certain distressed school districts, for educational assessment centers and for notification of pesticide treatments at schools. *(This document only includes the notification of pesticide treatments at schools).*

The General Assembly of the Commonwealth of Pennsylvania hereby enacts as follows:

Section 1. The act of March 10, 1949 (P.L.30, No.14), known as the Public School Code of 1949, is amended by adding sections to read: *(Sections 636.1 and 697 are omitted in this document).*

Section 772.1. Notification of Pesticide Treatments at Schools.

(a) The following apply to pesticide applicators:

- (1) For a pesticide treatment at a school building, the certified applicator or pesticide application technician shall supply the pest control information sheet and a pest control sign, which must be at least eight and one-half by eleven (8 1/2 by 11) inches in size, to the chief administrator or building manager.
- (2) For a pesticide treatment on school grounds, including athletic fields and playgrounds, the certified applicator or pesticide application technician shall supply the pest control information sheet and a pest control sign, which must be at least eight and one-half by eleven (8 1/2 by 11) inches in size, to the chief administrator or grounds manager.

(b) Responsibilities of schools are as follows:

(1) Except as provided in clause (3), notification of pesticide treatments shall be as follows:

(i) For a pesticide treatment at a school building, the school shall be responsible for all of the following:

- (A) Posting the pest control sign received under subsection (a)(1) in an area of common access where individuals are likely to view the sign on a regular basis at least seventy-two (72) hours before and for at least two (2) days following each planned treatment.
- (B) Providing the pest control information sheet received under subsection (a)(1) to every individual working in the school building at least seventy-two (72) hours before each planned treatment.
- (C) Providing notice, including the name, address and telephone number of the applicator providing the treatment, day of treatment and pesticide to be utilized, to the parents or guardians of students enrolled in the school at least seventy-two (72) hours before each planned treatment as follows:
 - (I) notice to all parents or guardians utilizing normal school communications procedures; or
 - (II) notice to a list of interested parents or guardians who, at the beginning of each school year, or upon the child's enrollment, requested notification of individual application of pesticides. The school shall provide procedures or materials for such requests to parents and guardians of students. Notification of each pesticide application shall be provided using first class mail or other means deemed appropriate by the school to each parent or guardian requesting notification.

(ii) For a pesticide treatment on school grounds, the school shall be responsible for all of the following:

- (A) Posting the pest control sign received under subsection (a)(2) at the place to be treated at least seventy-two (72) hours before and for two (2) days after the planned treatment.

- (B) Providing the pest control information sheet received under subsection (a)(2) to every individual working in the school building at least seventy-two (72) hours before each planned treatment.
- (C) Providing notice, including the name, address and telephone number of the applicator providing the treatment, day of treatment and pesticide to be utilized, to the parents or guardians of students enrolled in the school at least seventy-two (72) hours before each planned treatment as follows:
 - (I) notice to all parents or guardians utilizing normal school communications procedures; or
 - (II) notice to a list of interested parents or guardians who, at the beginning of each school year, or upon the child's enrollment, requested notification of individual application of pesticides. The school shall provide procedures or materials for such requests to parents and guardians of students. Notification of each pesticide application shall be provided using first class mail or other means deemed appropriate by the school to each parent or guardian requesting notification.
 - (iii) Notwithstanding any other provision of this section, where pests pose an immediate threat to the health and safety of students or employees, the school may authorize an emergency pesticide application. In the case of an emergency pesticide application, the school shall notify by telephone any parent or guardian who has requested such notification. School officials shall annually advise parents or guardians of their right to request notification of emergency pesticide use and shall explain procedures for requesting such notification.
- (2) Except as provided in clause (3), each school shall maintain detailed records of all chemical pest control treatments for a period of at least three (3) years.
- (3) The notice and record keeping requirements in clauses (1) and (2) and subsection (c) do not apply to the application of:
 - (i) disinfectant and antimicrobial products;
 - (ii) self-containerized baits placed in areas not accessible to students and gel type baits placed in cracks, crevices or voids; or
 - (iii) swimming pool maintenance chemicals in the care and maintenance of a swimming pool.
- (c) The following prohibitions shall apply:
 - (1) Except as provided in clause (2):
 - (i) pesticides may not be applied within a school building where students are expected to be present for normal academic instruction or organized extracurricular activities within seven (7) hours following the application, or on school grounds where students will be in the immediate vicinity for normal academic instruction or organized extracurricular activities within seven (7) hours following the application; or
 - (ii) the applicator shall comply with re-entry time restrictions contained on the pesticide label; whichever time period is longer.
 - (2) Students may not be present in an untreated portion of the school building unless the area being treated has a separate ventilation system and is separated from the untreated portion by smoke or fire doors, or is a separate building.
- (d) The department shall promulgate such rules and regulations as necessary to administer this section.
- (e) The following words and phrases when used in this section shall have the meanings given to them in this subsection unless the context clearly indicates otherwise:

“Applicator.” A certified applicator, commercial applicator or public applicator.

“Certified applicator.” An individual who is certified under section 16.1, 17 or 17.1 of the act of March 1, 1974 (P.L.90, No.24), known as the “Pennsylvania Pesticide Control Act of 1973,” as competent to use or supervise the use or application of any pesticide.

“Commercial applicator.” A certified applicator, whether or not he is a private applicator with respect to some uses, who uses or supervises the use of any pesticide on the property or premises of another or on easements granted under State law, or any applicator who uses or supervises the use of any restricted-use pesticide on property owned or rented by him or his employer, when not for purposes of producing an agricultural product. The secretary may by regulation deem certain types of applicators using any pesticide on their own property or that of their employer as commercial applicators.

“Department.” The Department of Agriculture of the Commonwealth.

“Insect.” Any of the numerous small invertebrate animals generally having a more or less obviously segmented body, for the most part belonging to the class Insecta, comprising six-legged, usually winged forms, as, for example, beetles, bugs, bees and flies, and to other allied classes of arthropods whose members are wingless and usually have more than six (6) legs, as, for example, spiders, mites, ticks, centipedes and wood lice.

“Nematode.” An invertebrate animal of the phylum Nematelminthes and class Nematoda, that is, unsegmented round worms with elongated, fusiform or sac-like bodies covered with cuticle and inhabiting soil, water, plants or plant parts. The term includes nemas and eelworms.

“Person.” An individual, partnership, association, corporation or any organized group of persons, whether incorporated or not.

“Pest.” An insect, rodent, nematode, fungus, weed or other form of terrestrial or aquatic plant or animal life or virus, bacteria or other micro-organism, except viruses, bacteria or other microorganisms on or in living man or other living animals, declared to be a pest under section 25(c)(1) of the Federal Insecticide, Fungicide, and Rodenticide Act (61 Stat. 163, 7 U.S.C. § 136w).

“Pest control information sheet.” A document which contains the date of treatment, the name, address and telephone number of the applicator, the pesticide utilized and any other information that is required by the Secretary of Agriculture.

“Pesticide.” A substance or mixture of substances intended for preventing, destroying, repelling or mitigating a pest and a substance or mixture of substances intended for use as a plant regulator, defoliant or desiccant.

“Pesticide application technician.” An individual employed by a commercial applicator or governmental agency who, having met the competency requirements as set forth in the act of March 1, 1974 (P.L.90, No.24), known as the “Pennsylvania Pesticide Control Act of 1973,” is registered by the Secretary of Agriculture to apply pesticides under the direct supervision of a certified applicator.

“Public applicator.” A certified applicator who applies pesticides as an employe of the Commonwealth or its instrumentalities or a local agency.

“School.” A school district, an intermediate unit or an area vocational-technical school or any of these entities acting jointly.

Section 2. This act shall take effect as follows:

- (1) The addition of sections 636.1 and 697 of the act shall take effect immediately.
(These are not included in this document).
- (2) The addition of section 772.1 of the act shall take effect January 1, 2003.
- (3) This section shall take effect immediately.

**Universal
Poison Control
Number
1-800-222-1222**

SUPPLEMENTAL MATERIALS AVAILABLE**Penn State Cooperative Extension Offices and/or the Pennsylvania Department of Agriculture.**

Booklice. 1998. Penn State Department of Entomology Pest Sheet. 1 p.

Carpenter ants. 1995. Penn State Department of Entomology Pest Sheet. 2 pp.

Chinch bugs. 1992. Penn State Department of Entomology Pest Sheet. 2 pp.

Clothes moths. 2000. Penn State Department of Entomology Pest Sheet. 2 pp.

Developing an integrated turfgrass pest management program. 1993. Penn State Cooperative Extension. 10 pp.

Eastern subterranean termites. 1992. Penn State Cooperative Extension. 6 pp.

Identifying common household insects in Pennsylvania. 2000. The PA IPM Program. 6 pp.

Managing turfgrass diseases. 1997. Penn State Cooperative Extension. 23 pp.

Moth flies in the home. 1998. Penn State Department of Entomology Pest Sheet. 1 p.

Pavement ant. 2000. Penn State Department of Entomology Pest Sheet. 2 pp.

Pennsylvania Pesticide Control Act of 1973, Act of March 1, 1974, P.L. 90, No. 24, 3 P.S. 111.21-111.61 (1987) and Title 7—Agriculture, Department of Agriculture, Part V. Bureau of Plant Industry, [7 Pa. Code Ch. 128], Pesticides, Rules and Regulations. Pennsylvania Department of Agriculture. 29 pp.

Silverfish. 1998. Penn State Department of Entomology Pest Sheet. 1 p.

Sod webworm. 1992. Penn State Department of Entomology Pest Sheet. 2 pp.

Weed management in turf. 1994. Penn State Cooperative Extension. 27 pp.

White grubs in home lawns. 1990. Penn State Department of Entomology Pest Sheet. 2 pp.

County Extension Offices

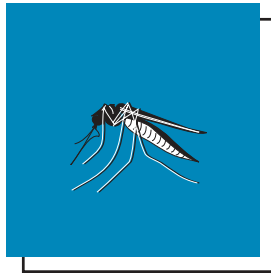
List of county offices is available at:

www.extension.psu.edu/CountyList.html

Pennsylvania Department of Agriculture Regional Offices

List and map of regional offices is available at:

sites.state.pa.us/PA_Exec/Agriculture/main/regions/index.htm



Visit Penn State's College of Agricultural Sciences on the Web: www.cas.psu.edu

Penn State College of Agricultural Sciences research, extension, and resident education programs are funded in part by Pennsylvania counties, the Commonwealth of Pennsylvania, and the U.S. Department of Agriculture.

This publication is available from the Publications Distribution Center, The Pennsylvania State University, 112 Agricultural Administration Building, University Park, PA 16802. For information telephone (814) 865-6713.

Where trade names appear, no discrimination is intended, and no endorsement by the Penn State College of Agricultural Sciences is implied.

This publication is available in alternative media on request.

The Pennsylvania State University is committed to the policy that all persons shall have equal access to programs, facilities, admission, and employment without regard to personal characteristics not related to ability, performance, or qualifications as determined by University policy or by state or federal authorities. It is the policy of the University to maintain an academic and work environment free of discrimination, including harassment. The Pennsylvania State University prohibits discrimination and harassment against any person because of age, ancestry, color, disability or handicap, national origin, race, religious creed, sex, sexual orientation, or veteran status. Discrimination or harassment against faculty, staff, or students will not be tolerated at The Pennsylvania State University. Direct all inquiries regarding the nondiscrimination policy to the Affirmative Action Director, The Pennsylvania State University, 328 Boucke Building, University Park, PA 16802-5901, Tel 814-865-4700/V, 814-863-1150/TTY.

© The Pennsylvania State University 2004

Produced by Information and Communication Technologies in the College of Agricultural Sciences

CAT AGRS-82

1.5M2/04acg4430